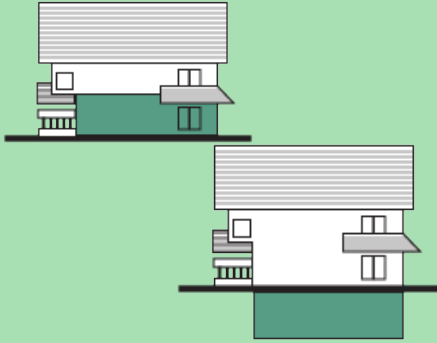


Land Use Bylaw: Secondary Suites

The Town of Westlock is updating the Land Use Bylaw. Secondary Suites are being split into 3 Use classes.

Secondary Suites



NEW regulations:

- 1 suite per lot
- Floor area of suite < dwelling
- Separate entry to suite
- Appear as one dwelling externally
- Additional parking required on-site

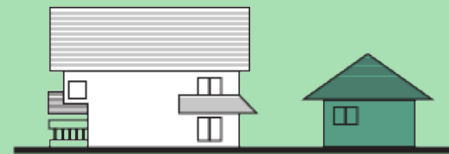
Garage Suites



NEW regulations:

- 1 suite per lot
- Floor area of suite < dwelling
- 1.5m (4.9ft) minimum rear & side setbacks
- 7.5m (24.6ft) maximum height OR no taller than the dwelling (whichever is less)
- Provisions to protect privacy of adjacent dwellings, including placement of windows, decks and balconies.

Garden Suites



NEW regulations:

- 1 suite per lot
- Floor area of suite < dwelling
- 1.5m (4.9ft) minimum rear & side setbacks
- 4.5m (15.1ft) maximum height
- Provisions to protect privacy of adjacent dwellings, including placement of windows, decks and balconies.

These are only a few of the proposed changes – visit www.westlock.ca/p/land-use-bylaw-update for more information. Public engagement will further shape these proposed changes. We are interested in hearing feedback on all proposed changes – positive and negative.

Contact: Development Services | planning@westlock.ca | 780-349-4444

