

Title: Snow Removal Guidelines for Roadways	
Resolution: 412-2007, 2018-0238	Revised: Sept 24, 2018
Special Notes/Cross Reference:	Next Review Date:
Attached Map	

POLICY STATEMENT : Winter maintenance operations for snow removal from roadways will be implemented by priority based on the location of the emergency routes, downtown business core, schools and classification of roadways such as: arterial, collector, and local.

PURPOSE : To provide a standard policy for removal of snow from roadways during normal winter weather conditions.

GUIDELINES / PROCEDURES / RESPONSIBILITIES:

Roadways:

Areas are shown on the attached Town of Westlock map for "Snow Clearing Priority".

- 1st Priority:** Emergency Routes - areas shown in red.
- 2nd Priority:** Area as shown in yellow, with the addition of Town managed parking lots.
- 3rd Priority:** Area as shown in blue.
- 4th Priority:** Area as shown in purple.

Following a triggering event, commencement of removal may take place on Priority 1 without placement of snow removal signage.

Upon completion of all Priority's, the Operations Department will commence snow removal in laneways.

Additionally, residents should note that in the event of an additional snow fall before residential streets are completed, snow removal crews will return to priority routes.

Signage:

1. Snow Removal Operation Signs will normally be put out a minimum of 24 hours prior to a particular area being cleaned so residents/ businesses are notified of the parking restrictions related to snow removal.
2. Vehicles obstructing snow removal operations will be fined and/ or removed, at the owners' expense.

3. Snow Removal sign placement, location, date and time will be recorded by the Operations department. Sign removal date and time will also be recorded by Operations.

Communication:

The Town will utilize on-line tools to notify residents that our Operations Department will be clearing in their neighbourhood within the next 72 hours and to watch for signage.

Implementation:

Winter snow removal operations will be initiated by the Operations Department based on:

1. A single event of loose snowfall greater than 150 mm
and/or
2. A total compacted accumulation depth of snow 150 mm or greater.

In the event Town resources cannot manage service levels for snow removal, the Manager of Operations/ Town Foreman, or his designate may at that time hire contractors to assist, until such time staff is once again self-sufficient and capable of sustaining operations.

At their discretion, the Town Foreman, may undertake specific clearing activities as deemed necessary.

GUIDELINES FOR METHODS OF SNOW REMOVAL ARE AS FOLLOWS:

Detailed Methods of Removal:

1. Blade of roadway only where removal/disposal of snow not required.
2. Stockpile snow on roadway centreline considering accesses and existing road width prior to removal.
3. Stockpile snow on roadway shoulder considering accesses and existing road width prior to removal.
4. Stockpiles should not exceed heights at intersections, which may impede vehicle site distances.

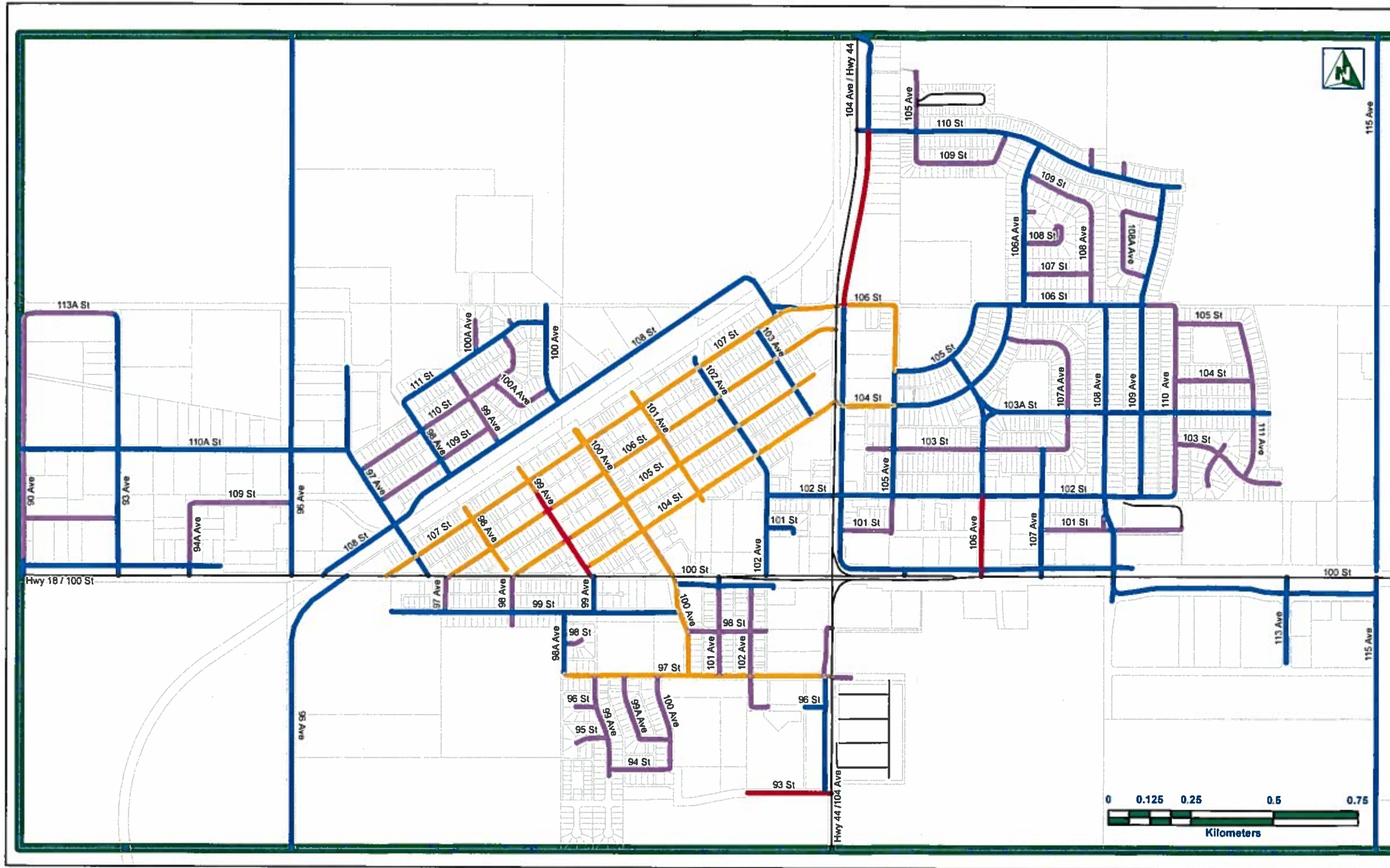
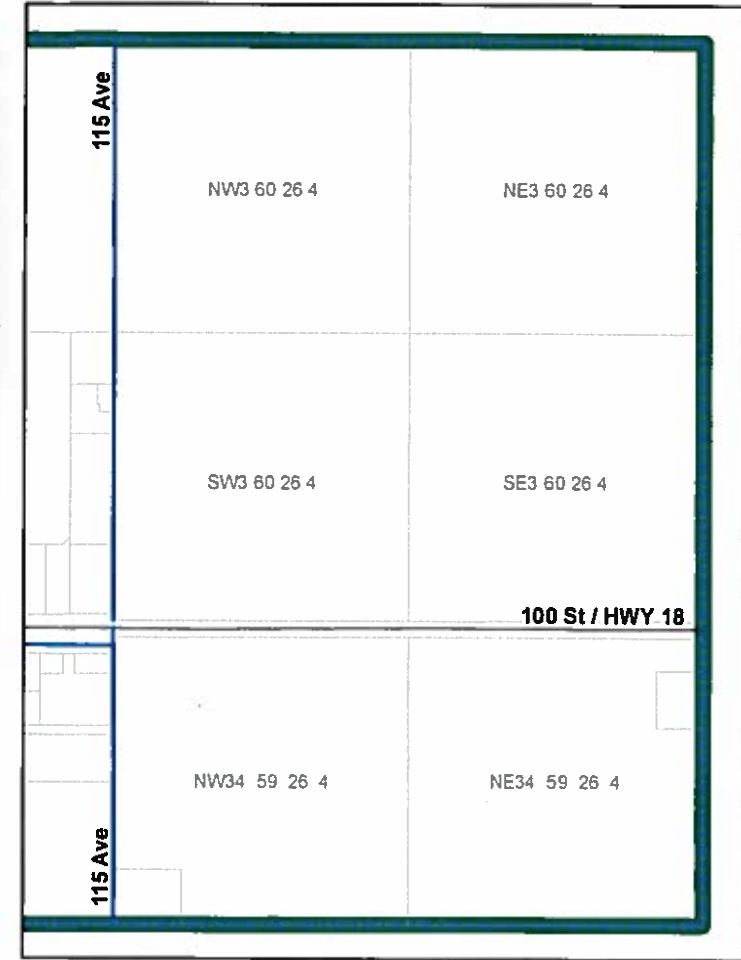


Mayor, Ralph Leriger



CAO, Dwight Dibben

EAST BOUNDARY DETAIL



Produced: 03/06/2018 Snow_Removal_Guidelines_P20_20017.pdf

Snow Clearing Priority

- First Priority - Emergency Routes
- Second Priority
- Third Priority
- Fourth Priority
- Non Municipal Jurisdiction



[Handwritten signature]