

Land Use Bylaw: Landscaping

The Town of Westlock is updating the Land Use Bylaw. Some changes are proposed for Landscaping requirements.



Residential Landscaping

NEW requirement:

- 10.0m maximum hard landscaping for front yards of Single-Detached, Semi-Detached and Row Houses

Current:

Reduces on-street parking

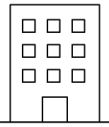
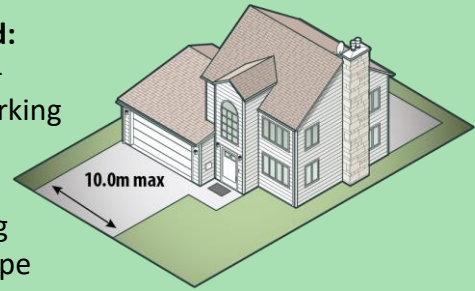
Potential drainage issues



Proposed:

More on-street parking

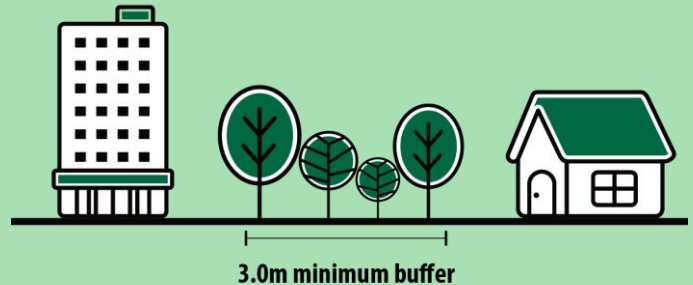
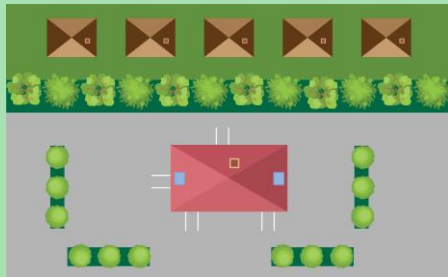
Visually appealing streetscape



Multi-Unit Residential Landscaping

NEW requirement:

- 20% of a multi-unit housing development site to be landscaped.



Commercial & Industrial Landscaping

NEW requirements:

- **Commercial:** 20% of site to be landscaped
- **Industrial:** 10% of site to be landscaped
- **Reduced tree and shrub requirements for all developments**

These are only a few of the proposed changes – visit www.westlock.ca/p/land-use-bylaw-update for more information. Public engagement will further shape these proposed changes. We are interested in hearing feedback on all proposed changes – positive and negative.

Contact: Development Services | planning@westlock.ca | 780-349-4444

